

INSTALLATION INSTRUCTIONS ATLA PENDANT WITH P1FKX HANGING SYSTEM

These instructions cover the ATLA luminaire with the following options:

SERIES	HANGING SYSTEM	SIZE	LIGHT SOURCE	CONTROL	WIRE DIAGRAM
AA2 AA3	P1FKX: PENDANT WITH SURFACE MOUNT CANOPY, SINGLE WHITE (P1FKW) OR BLACK (P1FKB) POWER CORD; MOUNTS TO 4X4 OCTAGON J-BOX (BY OTHERS)	12" 18"	STATIC WHITE	DM1: 0-10V DIM 1%	WIRE DIAGRAM ON PAGE 9

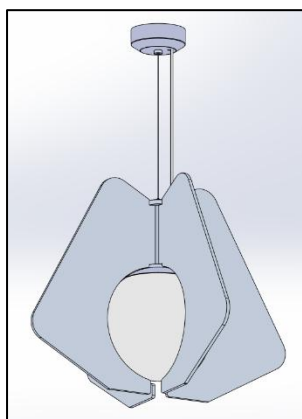


FIG. 1 – AA2-P1FKX-12-XX-
 GW-XXX-XXX-LEDX_XXK-
 UNV-XXX-DM1-XXX

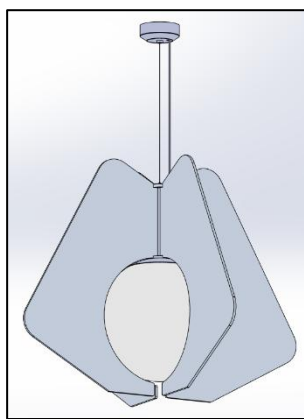


FIG. 2 – AA2-P1FKX-18-XX-
 GW-XXX-XXX-LEDX_XXK-UNV-
 XXX-DM1-XXX

GENERAL NOTES:

- PLEASE COMPLETELY READ THE INSTALLATION INSTRUCTIONS BEFORE STARTING INSTALLATION.
- TURN OFF POWER TO CIRCUIT FIXTURE WHILE IT IS BEING INSTALLED.
- INSTALL IN ACCORDANCE WITH ALL LOCAL, STATE AND NATIONAL CODES CONSULT WITH A QUALIFIED ELECTRICIAN FOR PROPER INSTALLATION.
 -CE PRODUIT DOIT ÊTRE INSTALLÉ SELON LE CODE D'INSTALLATION PERTINENT, PAR UNE PERSONNE QUI CONNAÎT. CONSULTER UNE ÉLECTRICIEN QUALIFIÉ POUR VOUS ASSURER QUE LES CONDUCTEURS DE LA DÉRIVATION SONT ADÉQUATS.
- CAREFULLY UNPACK ALL CONTENTS; SOME COMPONENTS MAY HAVE BEEN SHIPPED IN SEPARATE BOXES MOST FIXTURES ARE SHIPPED PARTIALLY ASSEMBLED. SOME UNASSEMBLY MAY BE REQUIRED FOR INSTALLATION.
- FIXTURE POWER CORD WIRES ARE LOW- VOLTAGE. DO NOT CONNECT TO LINE VOLTAGE OR DAMAGE TO THE FIXTURE WILL OCCUR AND WARRANTY WILL BE VOIDED.
- DO NOT LET THE ATLA LUMINAIRE HANG FREE UNTIL THE CABLE IS PROPERLY SECURED.
- DUE TO A CHANGE IN NEC SECTION 410.69 EFFECTIVE IN 2022, THE COLOR PINK WILL BE USED IN PLACE OF GRAY FOR 0-10V CONTROL. NOTE THAT EXISTING SYSTEMS AND FIXTURES MANUFACTURED PRIOR TO 2022 MAY STILL USE GRAY WIRE AS AN UNGROUNDED CONDUCTOR FOR 0-10V CONTROL. CARE SHOULD BE TAKEN WHEN WORKING ON EXISTING SYSTEMS.

OCL Architectural Lighting

Phone: 314.863.1895
 Fax: 314.863.3278
www.ocl.com

Table of Contents

GENERAL INFORMATION:	3
MOUNTING:	4
ATLA 12"AND 18" MOUNTING:	4
WIRE DIAGRAM:	9

AA1-P1FKX-LED-INSTALLATION-INSTRUCTIONS

GENERAL INFORMATION:

You will receive the following with each ATLA series pendant fixture:

1. REFLECTOR ASSEMBLY with CORD attached. (shown in FIG. 3)
2. ACRYLIC GLOBE. (shown in FIG. 4)
3. ACOUSTIC HOLDER ASSEMBLY. (shown in FIG. 5)
4. ACOUSTIC FIN. (shown in FIG. 6)
5. INSTALLATION INSTRUCTIONS (shown in FIG. 7) - Please completely read the install instructions before starting installation.
6. RED BAG (shown in FIG. 7) contains below following items:
 - a. CANOPY SUBASSEMBLY WITH AIRCRAFT CABLE (as shown in FIG. 8)
 - b. MOUNTING KIT CONTENTS
 - i. STRAIN RELIEF (as shown in FIG. 9)

WARNING: Examine all components for any damage before beginning installation.

WARNING: This fixture should be installed by a licensed electrician only.

WARNING: Be careful not to scratch or damage any finished parts.

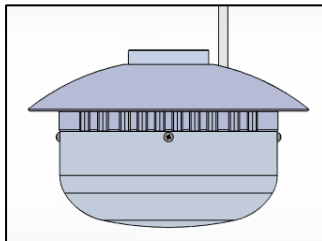


FIG. 3 - REFLECTOR
ASSEMBLY (PRE-ASSEMBLED)

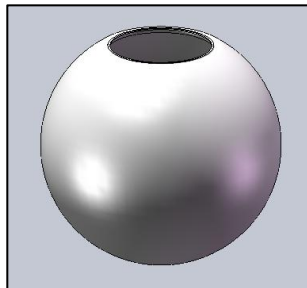


FIG. 4 ACRYLIC GLOBE

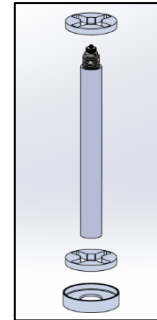


FIG. 5 ACOUSTIC HOLDER
ASSEMBLY

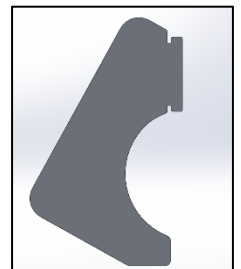


FIG. 6 ACOUSTIC FIN

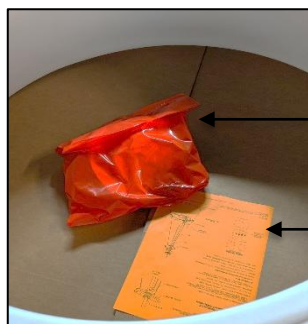


FIG. 7 RED BAG AND
INSTALLATION INSTRUCTIONS

RED BAG

INSTALLATION
INSTRUCTIONS

CANOPY
SUB ASSEMBLY
WITH AIRCRAFT
CABLE

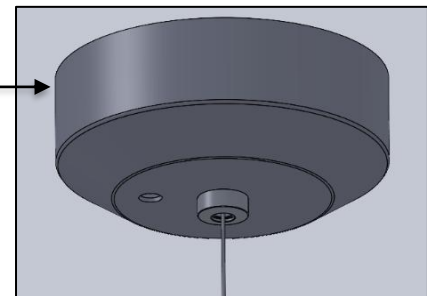


FIG. 8 - CANOPY SUBASSEMBLY

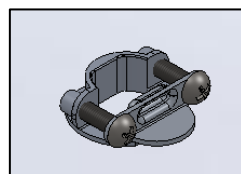


FIG. 9 - STRAIN RELIEF

OCL Architectural Lighting

Phone: 314.863.1895
Fax: 314.863.3278

www.oclighting.com

AA1-P1FKX-LED-INSTALLATION-INSTRUCTIONS

MOUNTING:

ATLA 12" and 18" MOUNTING:

1. Unscrew CANOPY FINIAL and remove CANOPY. Be careful not to scratch finish as shown in FIG. 10.
2. Unscrew the KNURLED NUT securing MOUNTING PLATE to driver MOUNTING BRACKET. Swing driver mounting bracket down and out of the way as shown below in FIG. 11.

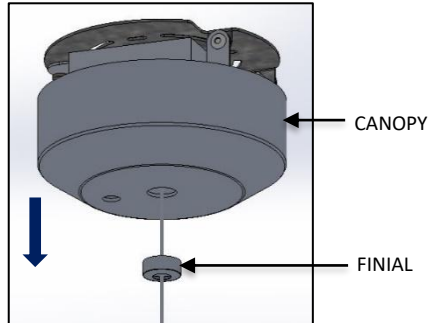


FIG. 10 – CANOPY DIS-ASSEMBLY

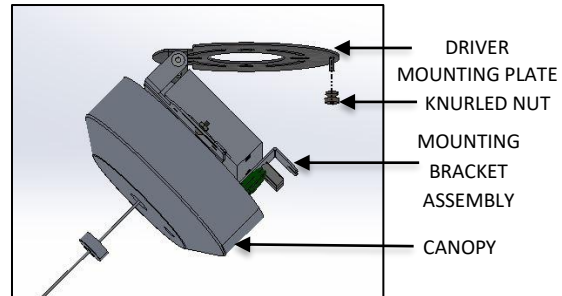


FIG. 11 – MOUNTING PLATE DIS-ASSEMBLY

3. Attach MOUNTING BRACKET to JUNCTION BOX (by other) as shown below in FIG. 12.
4. Tighten KNURLED NUT to secure DRIVER MOUNTING BRACKET to MOUNTING PLATE. As shown below in Fig. 13.

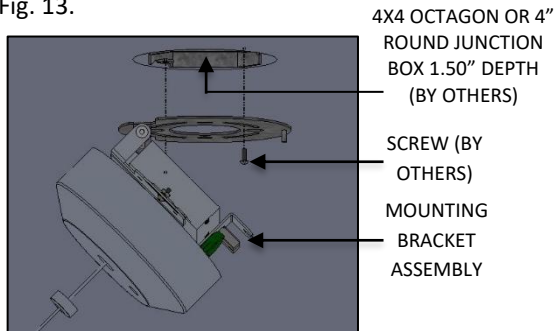


FIG. 12 – MOUNTING BRACKET ASSEMBLY INSTALLATION

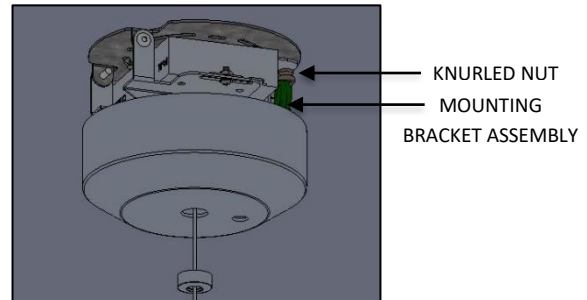


FIG. 13 – MOUNTING BRACKET ASSEMBLY

5. Loosely secure CANOPY to the ceiling by threading the FINIAL to the mounting bracket assembly as shown below in Fig. 14.

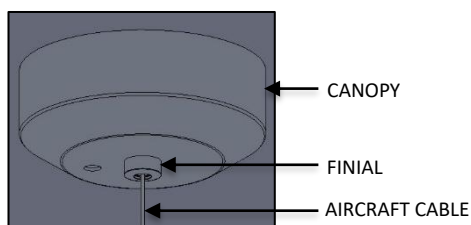


FIG. 14 –CANOPY INSTALLATION

OCL Architectural Lighting

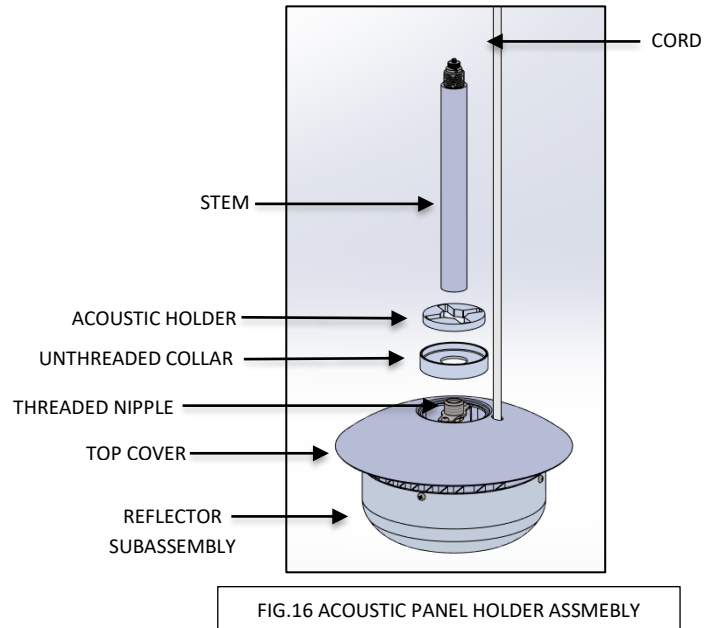
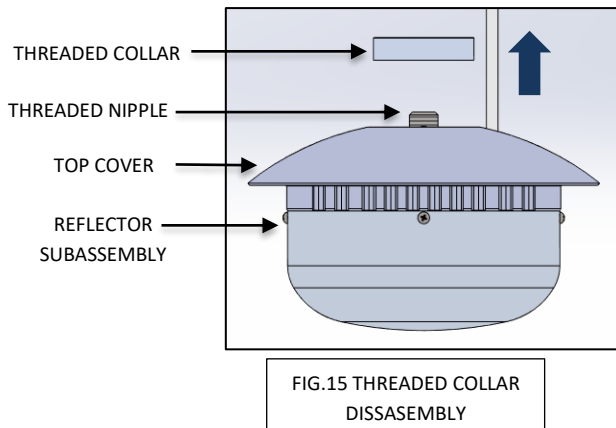
Phone: 314.863.1895

Fax: 314.863.3278

www.ocl.com

AA1-P1FKX-LED-INSTALLATION-INSTRUCTIONS

6. Unscrew the **THREADED COLLAR** from **THREADED NIPPLE** and remove it from the **REFLECTOR ASSEMBLY** as shown below in FIG. 15.
7. Center **TOP COVER**, **UNTHREADED COLLAR**, and **ACOUSTIC HOLDER** on top of **REFLECTOR SUBASSEMBLY** as shown in FIG. 16. Ensure the deeper recess on **UNTHREADED COLLAR** is facing up and will hold the **ACOUSTIC HOLDER**.
8. Screw the **STEM** onto the **THREADED NIPPLE** of the **REFLECTOR ASSEMBLY**. Be careful not to scratch the finish with the **ACOUSTIC HOLDERS**.



9. Feed **AIRCRAFT CABLE** through **THREADED COLLAR** and **ACOUSTIC HOLDER** then into the body of the **GRIPLOCK** and adjust fixture drop to desired height as shown in FIG. 17. Ensure **THREADED COLLAR** recess is facing down.
 - a. Each **AIRCRAFT CABLE** must pass at least 1.75" beyond the body of the **GRIPLOCK**. When cutting off excess cable always leave at least 1" of cable showing.
 - b. Cables may be cut using purpose-built cutters such as Felco C7. Cable will not fray unless passed repeatedly through the Gripper mechanism or otherwise abused.
 - c. To prevent fraying of freshly cut ends, re-solder or apply a drop of super-glue.

WARNING:



Do not let the ATLA LUMINAIRE hang free until **AIRCRAFT CABLE is secured.**

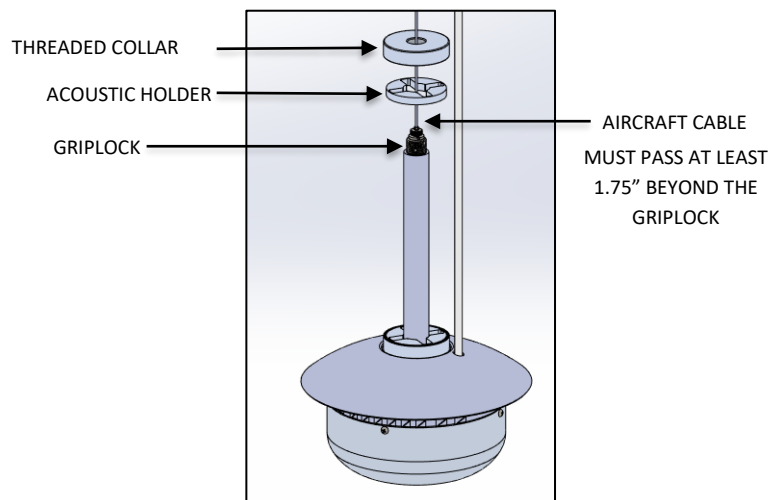


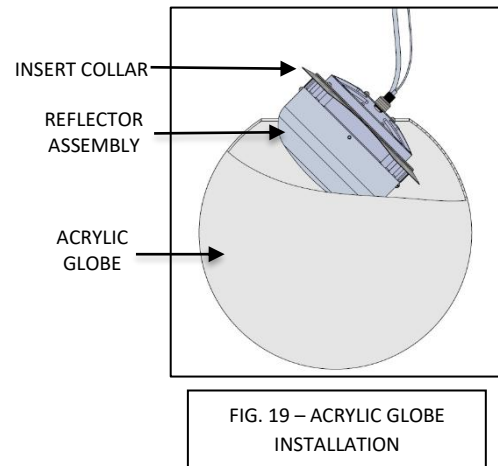
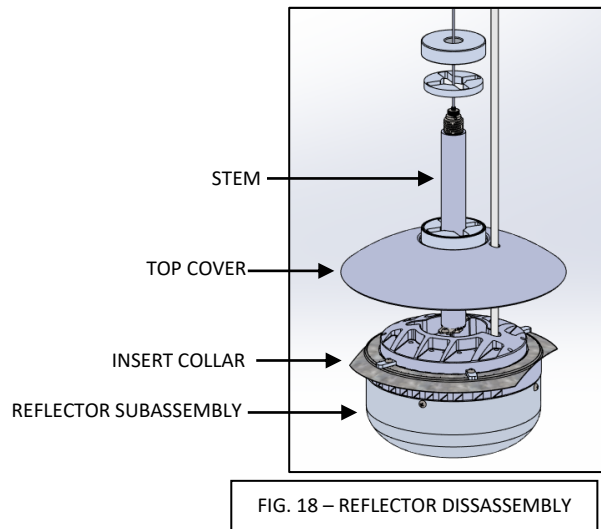
FIG.17 ACOUSTIC PANEL HOLDER ASSEMBLY

Fax: 314.863.3278

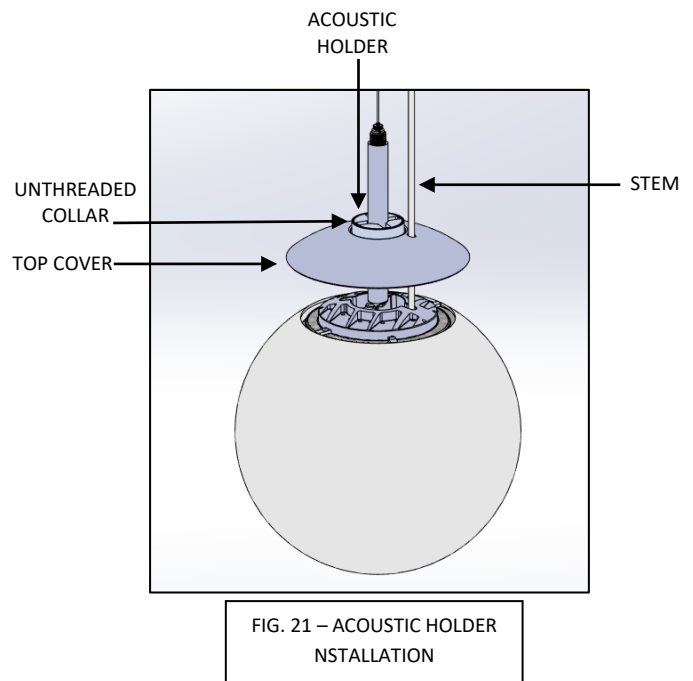
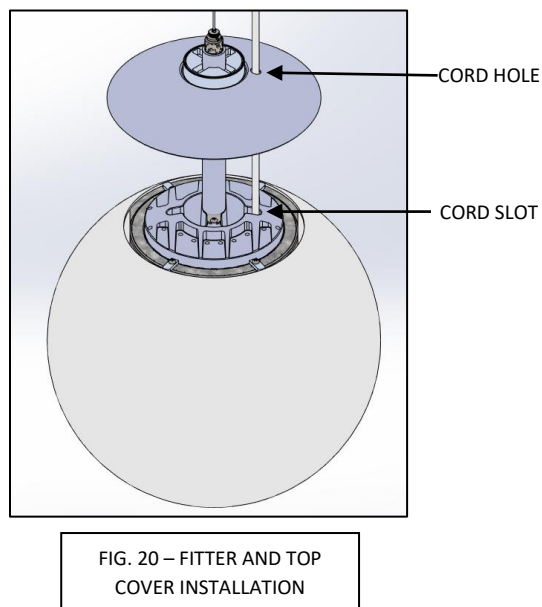
www.ocl.com

AA1-P1FKX-LED-INSTALLATION-INSTRUCTIONS

10. Lift TOP COVER from the REFLECTOR ASSEMBLY as shown below in FIG. 18. Be careful not to scratch the finish.
11. Tilt and Slide the REFLECTOR ASSEMBLY through the ACRYLIC GLOBE as shown in FIG. 19.

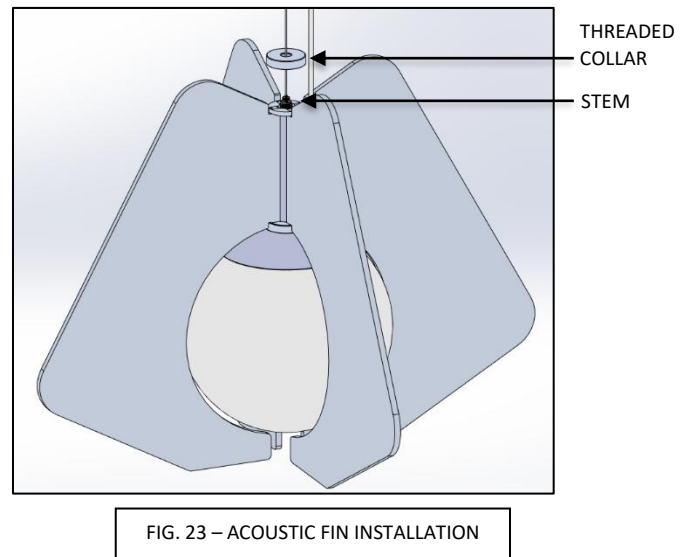
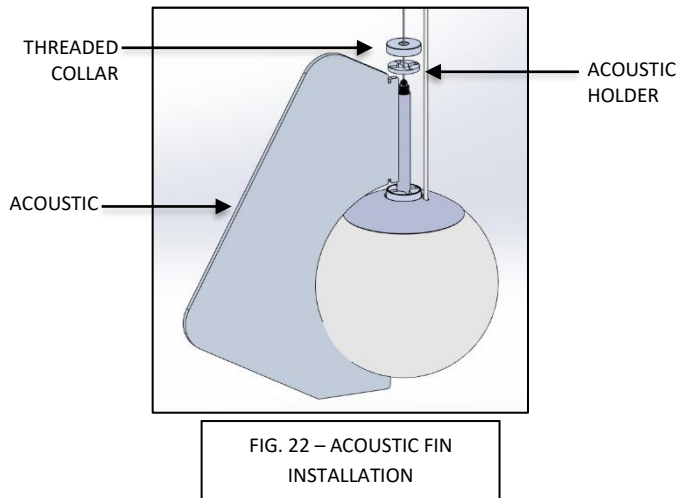


12. Make sure that ACRYLIC SHADE is properly seated onto the INSERT COLLAR and the CORD HOLE in TOP COVER lines up with the CORD SLOT in the REFLECTOR SUBASSEMBLY as shown in FIG. 20.
13. Carefully slide the TOP COVER, UNTHREADED COLLAR, and the bottom ACOUSTIC HOLDER back down as shown below in FIG. 21. Be careful not to damage fixture finish.



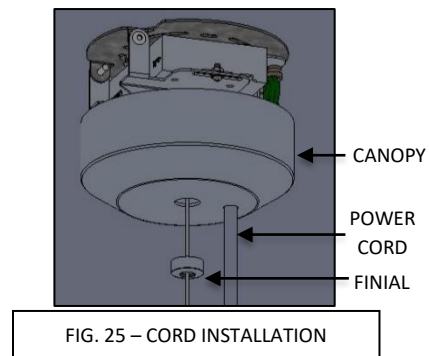
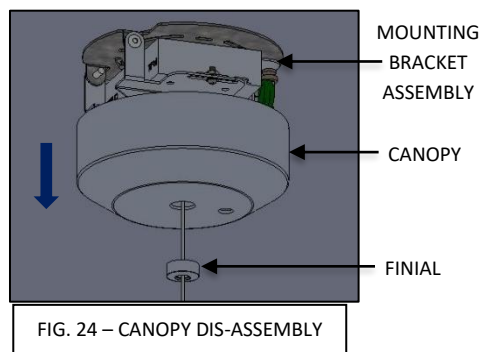
AA1-P1FKX-LED-INSTALLATION-INSTRUCTIONS

14. Raise the upper ACOUSTIC HOLDER and THREADED COLLAR and insert ACOUSTIC FINs into lower ACOUSTIC HOLDER as shown in FIG. 22.
15. With all ACOUSTIC FINs slotted into the lower ACOUSTIC HOLDER, insert the ACOUSTIC FIN tabs into the upper ACOUSTIC HOLDER as shown in FIG. 23. Ensure all fins are properly slotted into place and then screw on THREADED COLLAR onto STEM.



Unthread the FINIAL from the MOUNTING BRACKET ASSEMBLY and lower the CANOPY as shown below in FIG. 24. Be careful not to damage fixture finish.

16. Feed POWER CORD through the 2ND hole in the CANOPY and DRIVER MOUNTING BRACKET as shown below in FIG. 25.



AA1-P1FKX-LED-INSTALLATION-INSTRUCTIONS

17. Adjust FIXTURE drop to desired height. Mark cord with marker inside of DRIVER MOUNTING BRACKET as shown below in FIG. 26. Trim off excess cord leaving minimum of 8.00" past the top of the DRIVER MOUNTING BRACKET all thread.

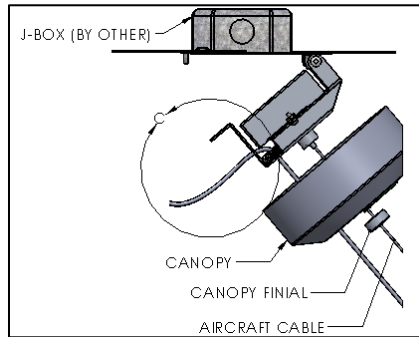
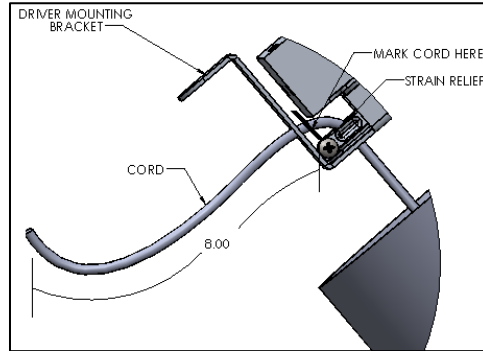


FIG. 26 -CORD INSTALLATION



DETAIL A

18. Insert cord through the strain relief and tighten two screws on the strain relief above hanging bracket where marked. If screws are not properly tightened cord could slip through the strain relief, causing the fixture to fall as shown in FIG. 27.
19. See WIRE DIAGRAM and WIRE LABEL TABLE as shown in FIG. 23 and 24 for wire connections. Make all wire connections in the inside the junction box (by others) in accordance with the NATIONAL ELECTRICAL CODE and all applicable LOCAL AND STATE CODES.



FIG. 27 - STRAIN RELIEF WITH CORD INSERTED

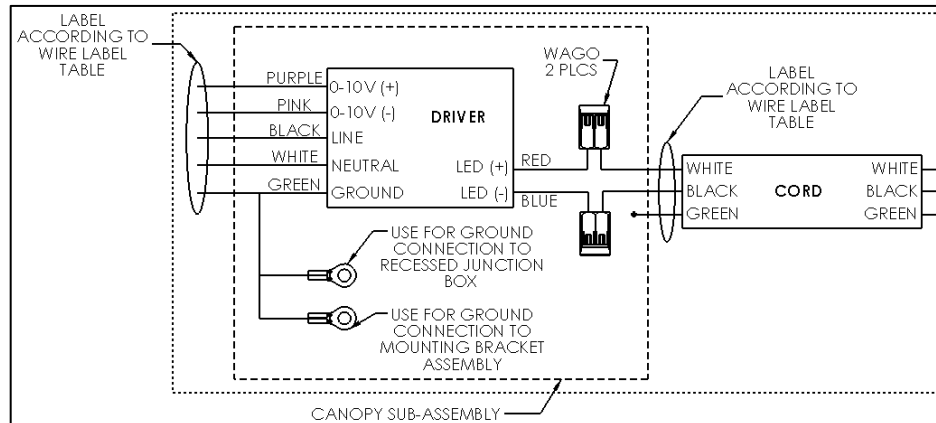
AA1-P1FKX-LED-INSTALLATION-INSTRUCTIONS

SERIES	HANGING SYSTEM	SIZE	LIGHT SOURCE	CONTROL	WIRE DIAGRAM
AA1 (ATLA)	P1FKX: PENDANT WITH SURFACE MOUNT CANOPY, SINGLE WHITE (P1FKW) OR BLACK (P1FKB) POWER CORD; MOUNTS TO 4X4 OCTAGON J-BOX (BY OTHERS)	12" 14" 18" 22"	STATIC WHITE	DM1: 0-10V DIM 1%	WIRE DIAGRAM ON PAGE 9

WIRE DIAGRAM:

WIRE LABEL TABLE		
CONTROL	WIRE COLOR	LABEL
ALL	WHITE(CORD)	LED(+)
ALL	BLACK(CORD)	LED(-)
ALL	BLACK(DRIVER)	LINE VOLTAGE
ALL	WHITE(DRIVER)	NEUTRAL
ALL	GREEN(DRIVER)	GROUND
ALL	RED(DRIVER)	LED(+)
ALL	BLUE(DRIVER)	LED(-)
DM1	PURPLE	0-10V (+)
DM1	PINK	0-10V (-)

FIG. 28 – WIRE LABEL TABLE



SEE GENERAL NOTE 7 ON PAGE 1

FIG. 29 – WIRE DIAGRAM

OCL Architectural Lighting

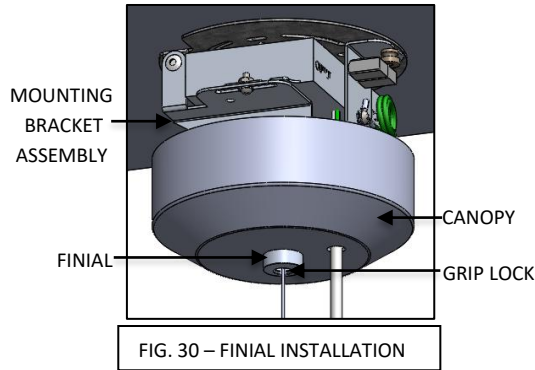
Phone: 314.863.1895

Fax: 314.863.3278

www.ocllighting.com

AA1-P1FKX-LED-INSTALLATION-INSTRUCTIONS

20. Raise CANOPY and secure to ceiling by threading the FINIAL to the NIPPLE (available in MOUNTING BRACKET ASSEMBLY) as shown below in FIG. 30.



21. Restore power to circuit the ATLA series pendant is connected to.
- Test to ensure luminaire turns on after power is restored.
 - Contact OCL for any luminaire troubleshooting if a problem occurs.

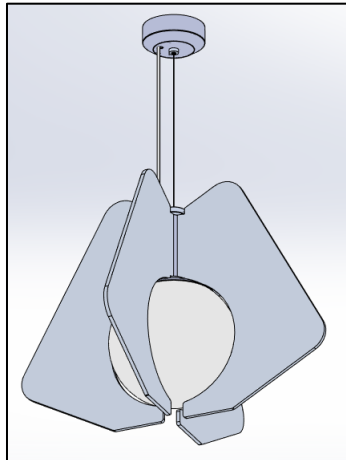


FIG. 31 - COMPLETED INSTALLATION OF ATLA PENDANT WITH P1FKX HANGING SYSTEM